

# Linking Conservation of Great Apes And Poverty Alleviation: Masindi, Uganda Conference 2010



## Outline for Field Day Visits

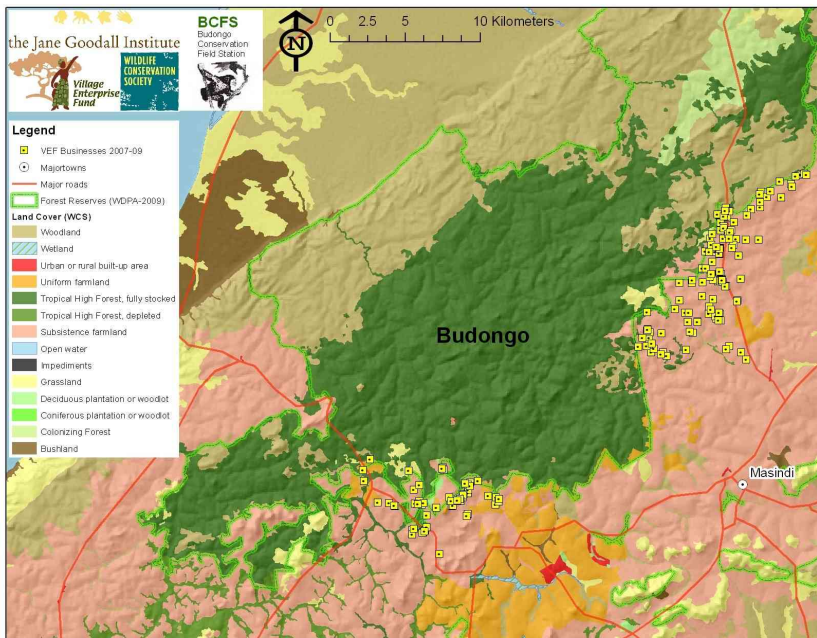
November 17, 2010 – Budongo Forest Area

# Contents

- ▶ Budongo Forest Conservation Background
  - ▶ Village Enterprise Fund's Development Model
  - ▶ Budongo Project Partnership Approach
  - ▶ Various "Linking" Approaches
  - ▶ Field Day Overview
- 

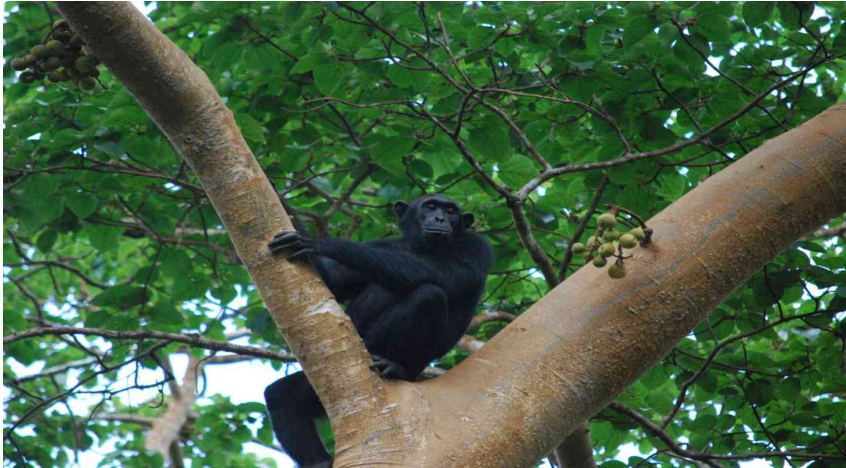
# Budongo Central Forest Reserve

- ▶ Northern limit of Albertine Rift
- ▶ 790 km<sup>2</sup> with 435 km<sup>2</sup> of forest
- ▶ High biodiversity--rich in tree species
- ▶ Known for mahogany trees and chimpanzees (est. 600)
- ▶ Commercial extraction of timber since 1915 (77% of forest cut at least once)
- ▶ Under National Forest Authority jurisdiction
- ▶ Tourism with chimp trekking
- ▶ Human population of roughly---, high growth rate of %, and poverty rates of --- to ---%
- ▶ Much research conducted: community and forest



# Important Chimpanzee Habitat

(Pan troglodytes schweinfurthii–Eastern Chimpanzee)



- ▶ One of 4 Ugandan forests with viable population--roughly 600 chimps (2003)
- ▶ Northern anchor of possible corridor project
- ▶ One of 16 Chimpanzee Conservation Units seen as priority (2010)

# Several NGOs Working in Area

- ▶ Government:
  - National Forest Authority
  - Ugandan Wildlife Authority
- ▶ Conservation:
  - The Jane Goodall Institute
  - Budongo Conservation Field Station
  - Eco-Trust (previously)
- ▶ Development:
  - Village Enterprise Fund

# Communities and Conservation: Difficulties

## **Defensive Attitude:**

- ▶ feel alienated
- ▶ not benefiting from the forest resources income
- ▶ crop raiding by the forest fauna
- ▶ Too much attention on forest flora and fauna; little support to adjacent communities
- ▶ High levels of both community and household poverty

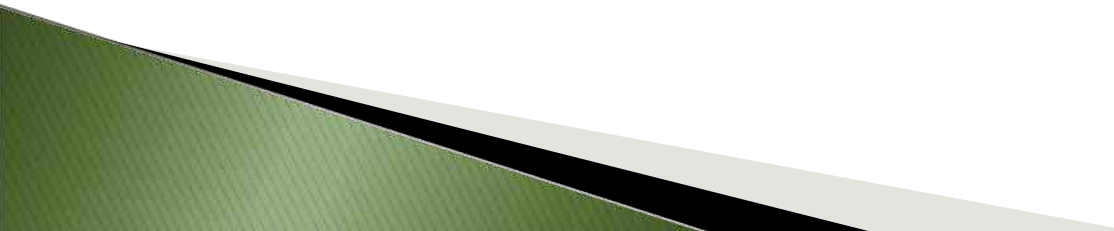
## **Little Conservation/Environmental Knowledge:**

- ▶ little knowledge on the importance biodiversity conservation
- ▶ Limited knowledge on how to start and run profitable alternative income generating enterprises

## **Unsustainable Practices:**

- ▶ illegal logging by urban-based timber dealers who derive much profit while exploiting the poor
- ▶ Hunting supplements protein diet and can serve as source of income
- ▶ Communities Forest resources income mostly geared to addressing the community poverty
- ▶ Most of the households living around the forest are subsistence farmers with limited land

# Village Enterprise Fund's Goals for Conservation and Micro-enterprise Development

- ▶ To integrate the fundamental needs of indigenous people for income and employment with those of environment conservation
  - ▶ To enable business owners living adjacent to the forest to improve their standard of living through the production of goods and services while expanding their environmental stewardship
  - ▶ To ensure the survival and self sufficiency of these communities, as stewards of natural forests and producers not dependent on forests solely but empowered with skills and knowledge to run alternative livelihoods
  - ▶ To assure the viability of both natural environment and human communities
- 

# Budongo Project Partnership Approach



**BCFS**  
Budongo  
Conservation  
Field  
Station



- ▶ Strategy
- ▶ Key Elements:
  - Mentor Identification
  - Training Materials
  - Business review
- ▶ Joint face to business owners
- ▶ Assessments
- ▶ Assistance as needed

“Stay within expertise”

# Village Enterprise Fund's Development Approach: Training

1. Business Training , empowers group of five, to create and operate small income generating activities.
  
1. Conservation Training
  - basic knowledge of local environment resources
  - builds awareness of potential threats of environmental degradation
  - encourages dialogue about the potential impacts of/to business



# Village Enterprise Fund's Development Approach: Grants



## Seed capital grants:

- ▶ \$150 go to trained groups with approved grant applications
- ▶ 2 installments
- ▶ Combine with group contributions go to finance various income generating activities
- ▶ Examples:
  - Agriculture (maize, beans)
  - Livestock (goats, chickens, pigs)
  - Retail (kiosks, butchery)

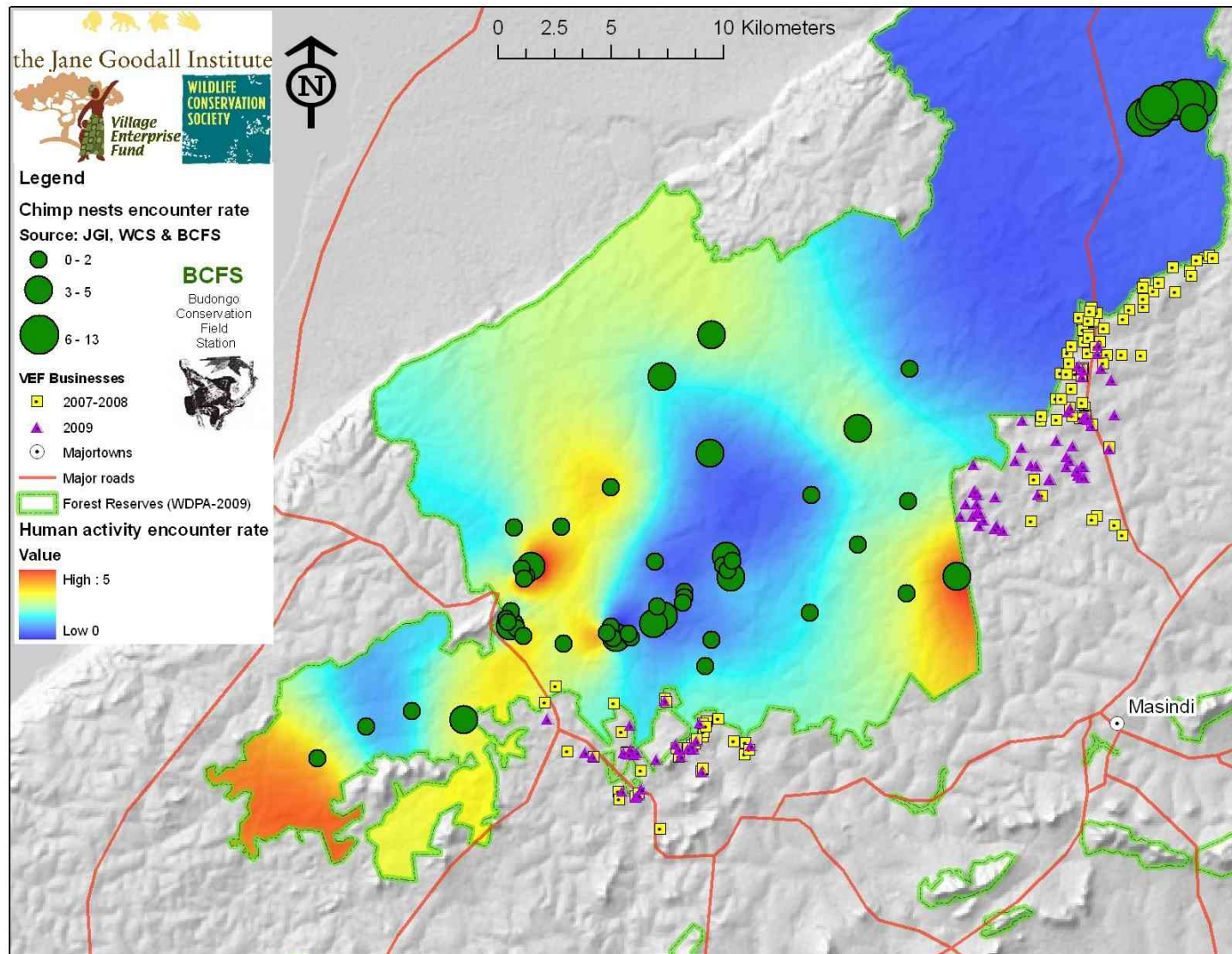
# Village Enterprise Fund's Development Approach: Mentoring

## Ongoing Mentoring:

' by the Business mentors provides the communities with the personalized advice and encouragement for at least one year.



# Target: rural poor living adjacent to Budongo Forest



# Linking Conservation and Poverty Alleviation: Definition of Poverty

<b>Community</b>	lack of communal human settlement facilities and services e.g. lack of health and educational facilities, good access roads and clean water sources etc
<b>Household</b>	<ul style="list-style-type: none"><li>▶ lack of regular sources of income</li><li>▶ inability to provide for basic necessities for the family</li><li>▶ lack privately owned capital and land</li></ul>

# Linking Conservation and Poverty Alleviation: Approaches

<b>Government/Community</b>	Agreement with Reciprocity <ul style="list-style-type: none"><li>▶ Shared revenue</li><li>▶ Collaborative Forest Management</li></ul>
<b>Umbrella/Producer Group</b>	Agreement b/w Businesses <ul style="list-style-type: none"><li>▶ Unrelated (e.g. banking, training)</li><li>▶ Producer (e.g. goat rearing, maize growing )</li><li>▶ Related (e.g. tourism support)</li></ul>
<b>Business/Household</b>	Individual Businesses <ul style="list-style-type: none"><li>▶ Alternative income</li><li>▶ Related income (e.g. guides, tourist handicrafts)</li></ul>

# Linking Conservation and Poverty Alleviation: Field Examples

<p>Government/ Community/JGI</p>	<p>Agreement with Reciprocity</p> <ul style="list-style-type: none"> <li>▶ Shared revenue</li> <li>▶ Collaborative Forest Management</li> </ul>	<ul style="list-style-type: none"> <li>▶ NFA</li> <li>▶ KICODA (CFM)</li> <li>▶ Community Forest</li> <li>▶ Kanyio–Pabidi Lodge (local employment)</li> </ul>
<p>Umbrella/ Producer Group</p>	<p>Agreement b/w Businesses</p> <ul style="list-style-type: none"> <li>▶ Unrelated (e.g. banking, training)</li> <li>▶ Producer (e.g. poultry , goat rearing )</li> <li>▶ Related (e.g. tourism support)</li> </ul>	<ul style="list-style-type: none"> <li>▶ Umbrella (Savings/Loan) groups providing local financing to small business groups/individual businesses</li> </ul>
<p>House hold businesses</p>	<p>Individual Businesses</p> <ul style="list-style-type: none"> <li>▶ Alternative income</li> <li>▶ Related income (e.g. guides, tourist handicrafts)</li> </ul>	<ul style="list-style-type: none"> <li>▶ Tourist Crafts</li> <li>▶ Goat business (ex–hunter)</li> <li>▶ Other businesses</li> </ul>