



AFRICAN WILDLIFE FOUNDATION®

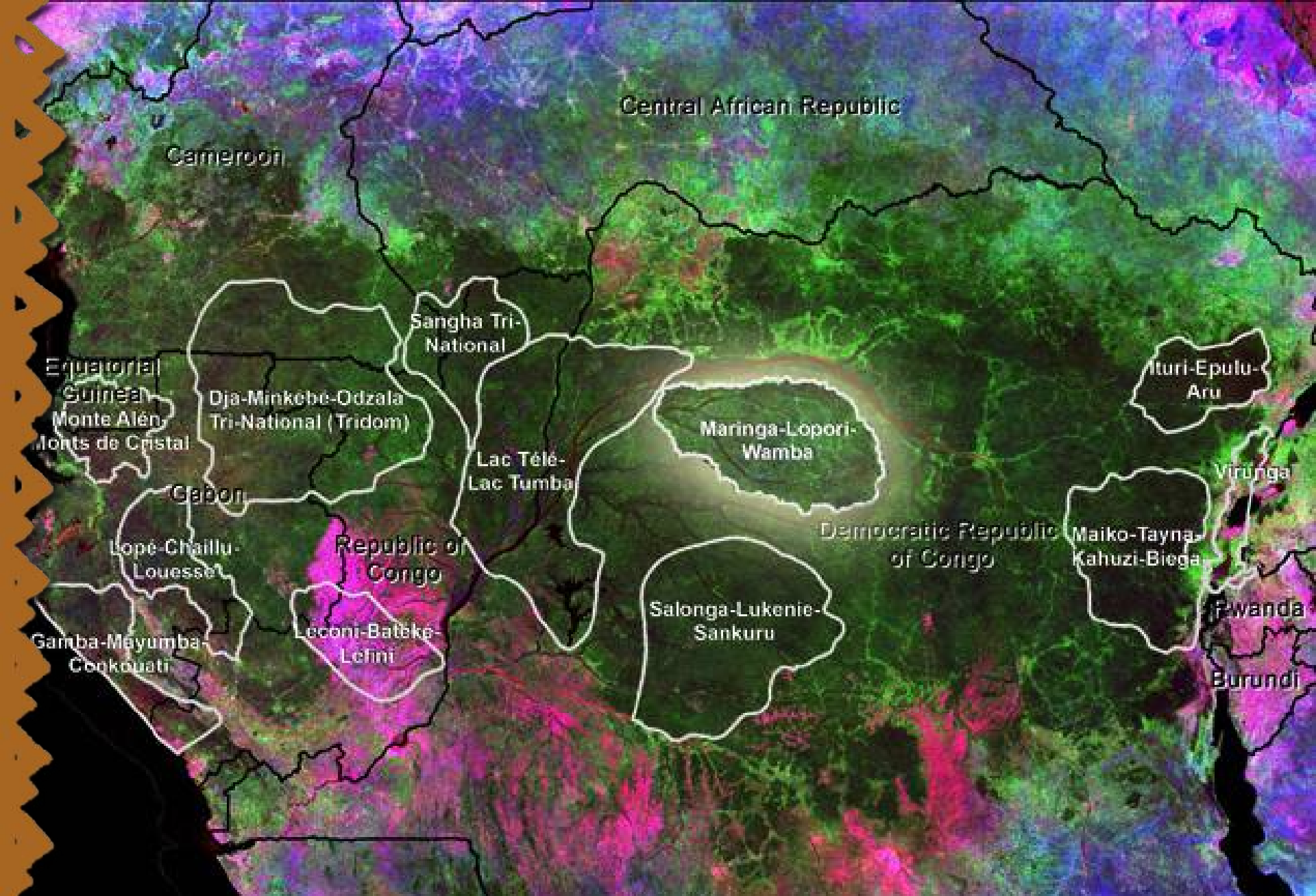
Poverty and Conservation Learning Group

November 16, 2010

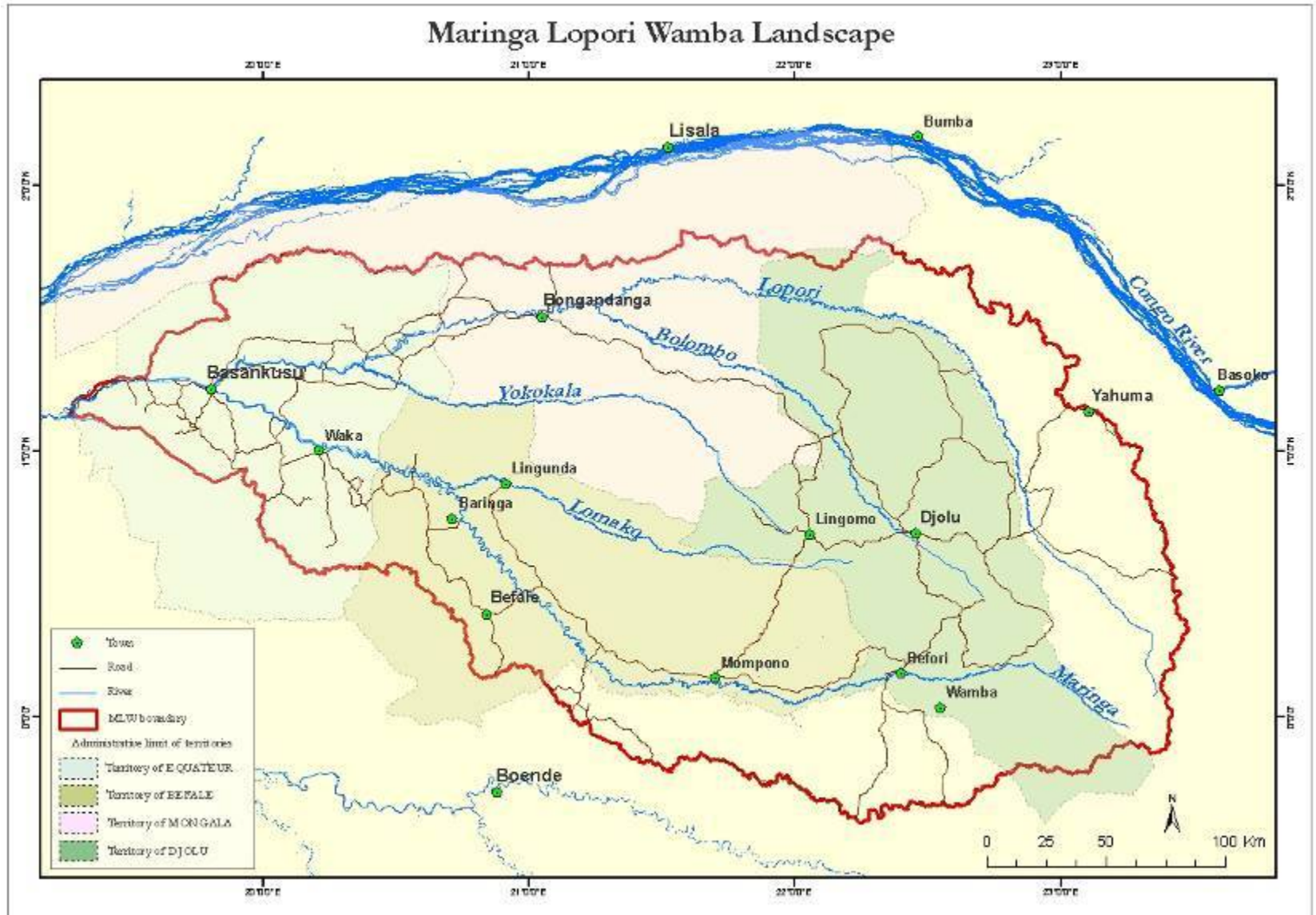
Masindi, Uganda

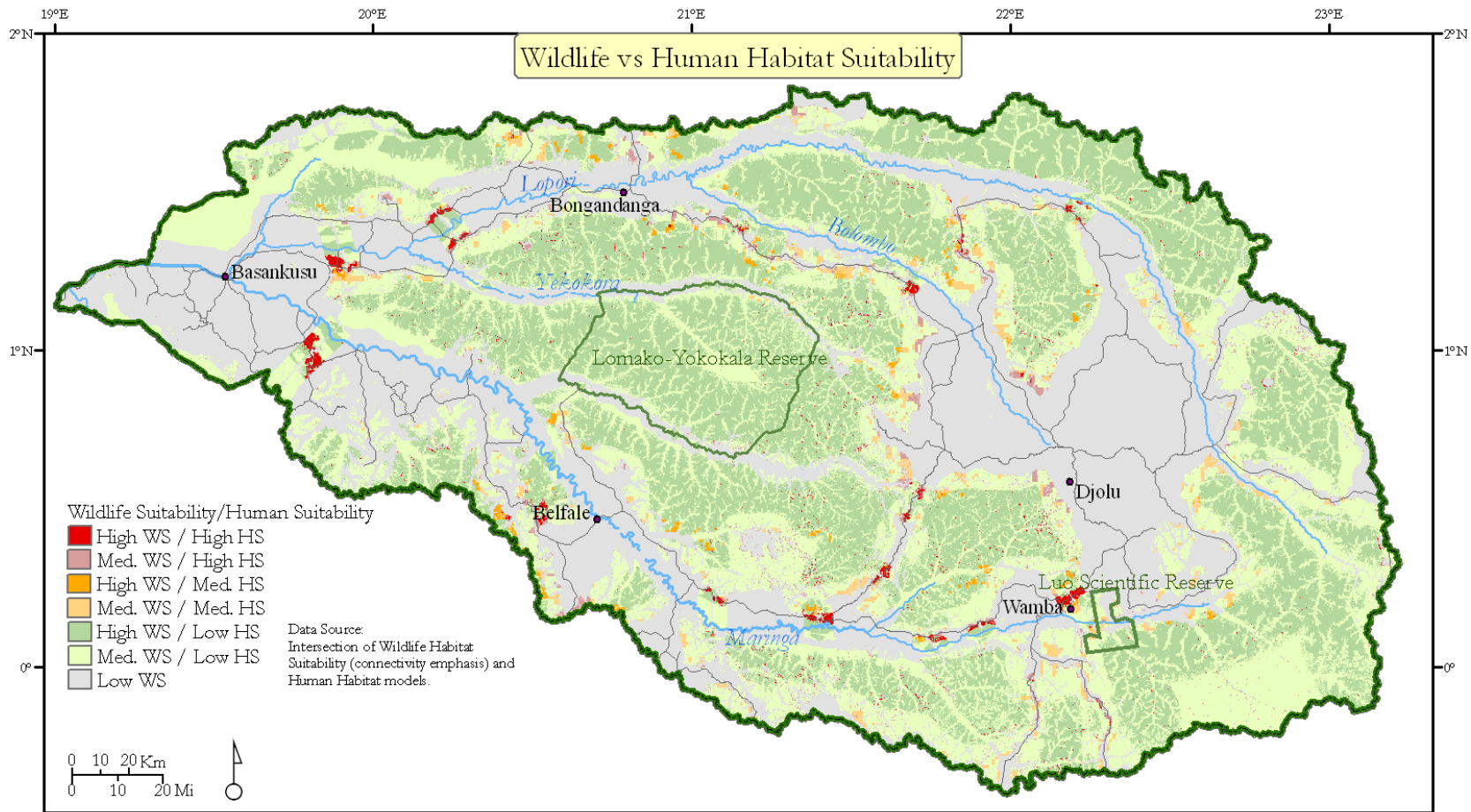


AFRICAN WILDLIFE FOUNDATION®



Focus on process



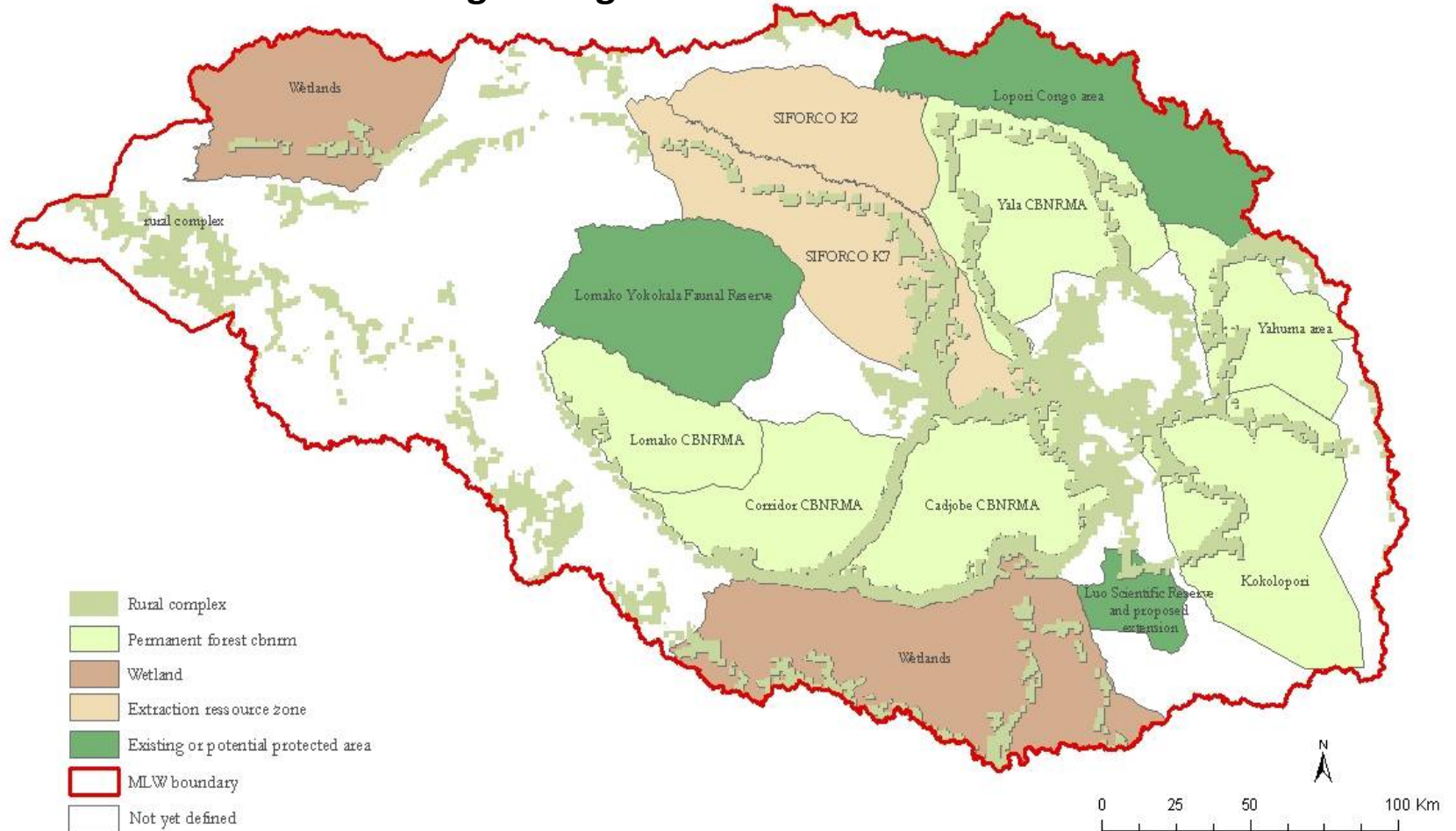


Réserve de Faune de Lomako Yokokala (RFLY)

June 2006

3,625km²

Territoire Bongandanga – Territoire Befale



Congolese Institute for Nature Conservation (ICCN)

AWF-facilitated (technical and financial)

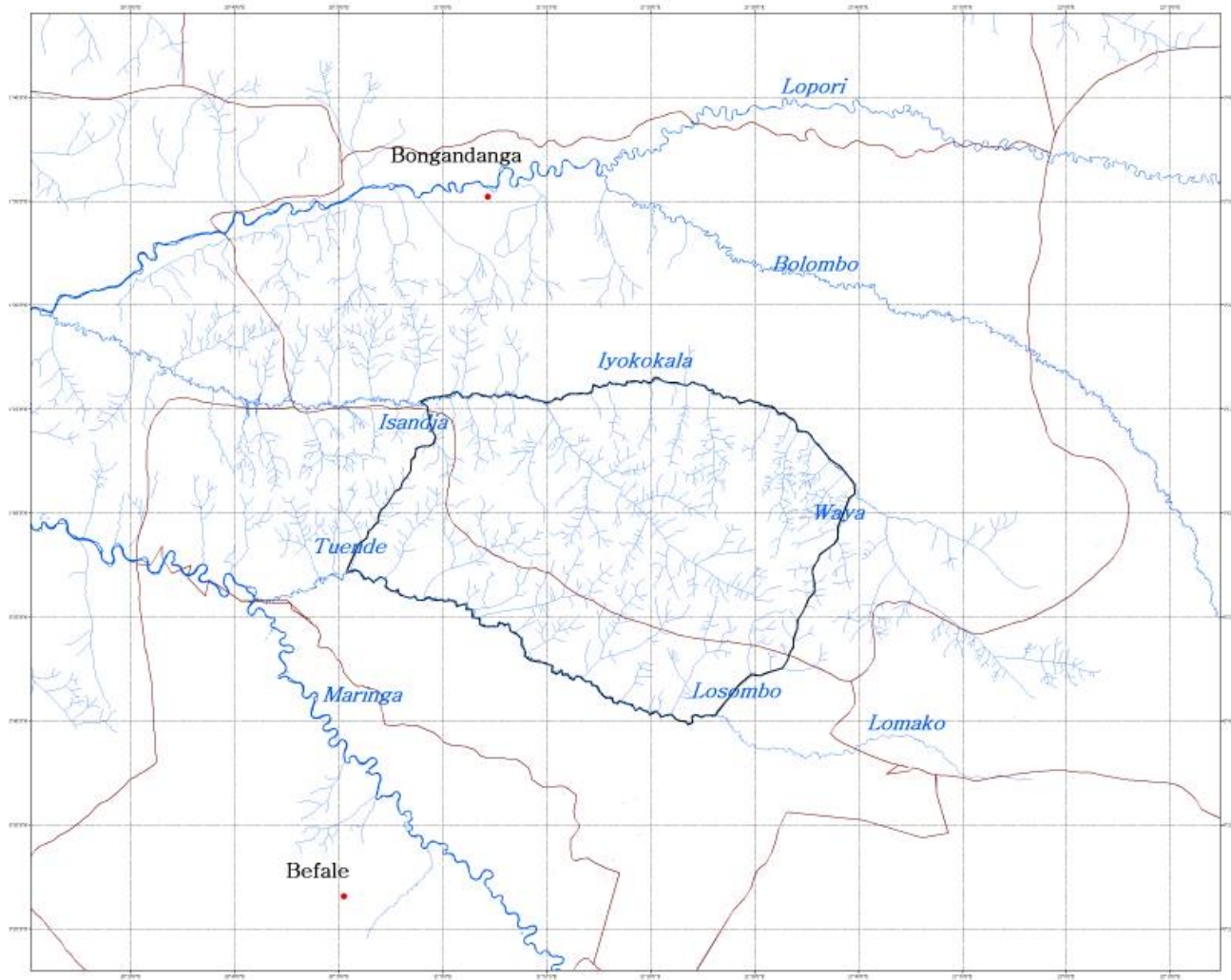


AFRICAN WILDLIFE FOUNDATION®

2004-2006



Delineated and created by/with the local communities



- RDC
- Landscape MLW
- Limites Réserve proposée de Lomako

- Légende**
- Territoires
 - Bongandanga
 - Befale
 - Réserve proposée de Lomako
 - Rivières

Projection: UTM 34N, WGS 84



Réserve Proposée de Lomako-Iyokokala



Source: AWF, Laboratoire d'Analyse spatiale
RDC/ Octobre 2005

Contact: Ir. Didier BOKELO BILE, LIS Officer



AFRICAN WILDLIFE FOUNDATION®

Arrêtée Ministériel 024/.../.../.../28 juin 2006 portant création de la RFLY

Art.5: the PA will be managed in a way to contribute to the socio economic development of the surrounding communities, and this through the “participative community conservation strategy”

Contrat de collaboration ICCN - AWF pour la gestion de la RFLY (Juillet 2006)

Art.1: AWF s’engage à

Développer et exécuter un programme de conservation communautaire participative à la RFLY ;

Valoriser les ressources de la RFLY, notamment par la recherche scientifique et le tourisme ;

Art.2: ICCN et AWF conviennent de collaborer d’une manière non exclusive dans les activités ci-aprèsl’implication des communautés locales dans l’élaboration et l’exécution du plan de gestion de la RFLY ;



Management of the RFLY



Comité de Coordination du Site (CoCoSi)

13members

Representatives of:

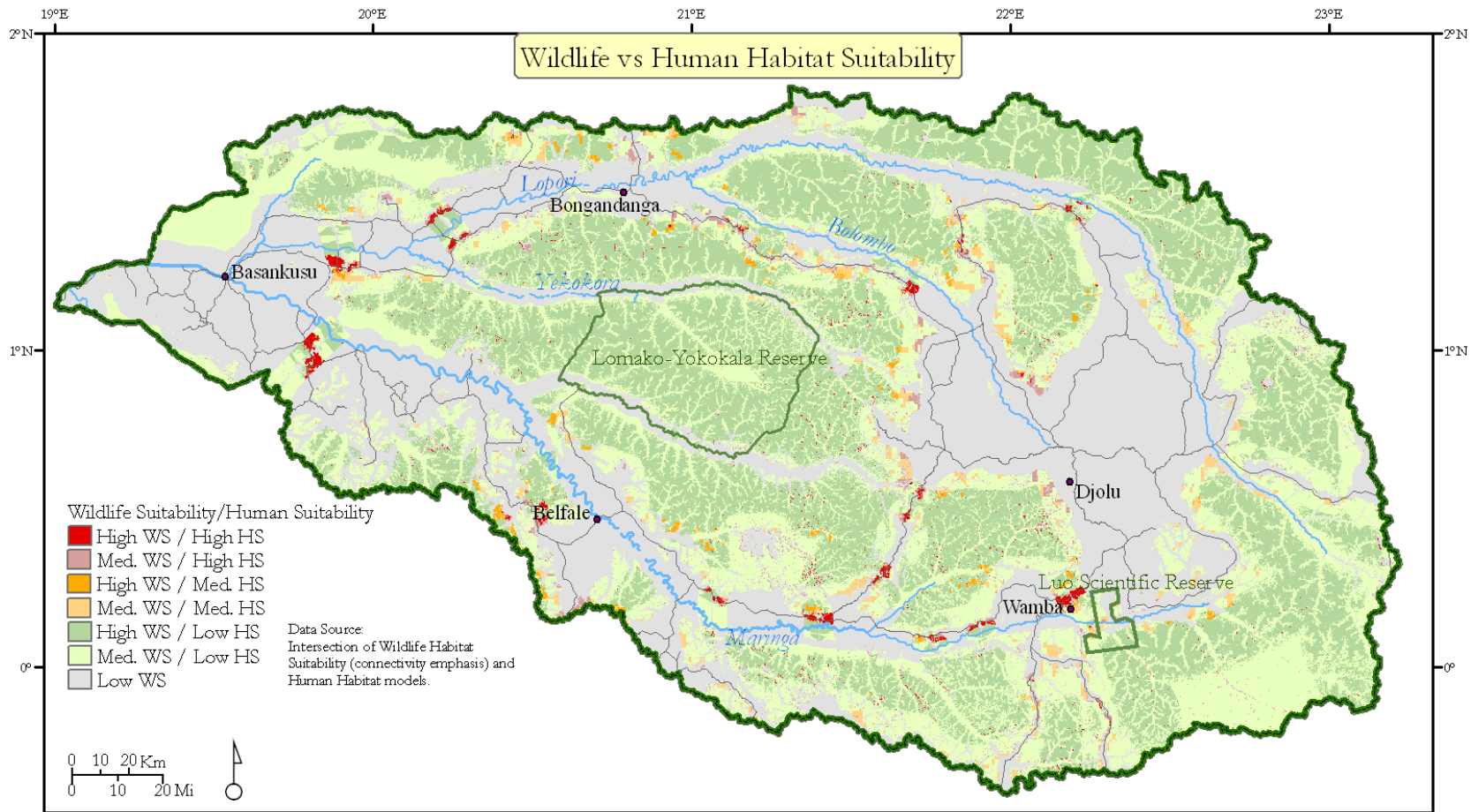
Local communities
women's associations

local NGO
Autochtonous ple

admin autorities
ICCN
AWF

- * Develop management plan
- * Supervise implementation of management plan
- * Evaluate finances
- * Conflict resolution





HEADQUARTERS OF ICCN-RFLY LINGUNDA

ICCN staff (60guards) selected amongst local communities, contract with the government.
Inclusion of women, autochtonous people and minorities (e.g. Kitawalist)
On long term, salaries should be covered X % by income to reserve.



Lomako Conservation Science Centre (LCSC)



A contract was signed that allows AWF to build a centre for research and tourism and negotiate a contract for management with third parties, always in consultation with ICCN and CoCoSi, within which CdC
This centre, managed by AWF in consultation with ICCN, should attract paying visitors, researchers or tourists.



LCSC engages and trains representatives of the local communities as guides/cooks/porters, etc...
Contracts signed with the LCSC



Business Plan for the Development of Scientific Tourism

Proposed fee structure approved by CoCoSi

Lomako - Bonobo Wildlife Tourism

Bednight Rates

Lomako Tourists (Direct)		Third Party Tourists	
Bednight Fee	Park Fee	Bednight Fee	Park Fee
\$450	\$80	\$220	\$80

Lomako - Scientific Tourism

Bednight Rates

Park fee researchers: 10USD/day

Short Term (daily fee)				Long Term (daily fee)				Comments
International		Domestic		International		Domestic		
Sr. Researcher	Jr. Researcher	Sr. Researcher	Jr. Researcher	Sr. Researcher	Jr. Researcher	Sr. Researcher	Jr. Researcher	
\$50	\$50	\$0	\$0	\$35	\$35	\$0	\$0	Short term researchers are those staying less than 1 month



Some remarks/challenges

- Importance of interactive participation from beginning during development of any product (creation protected area, development alternative activities as scientific tourism);
- Need for enforcement of capacities of local communities (CdC)
- Challenge to identify “real” representatives;
- Challenge to develop participative management through the government. (problem cahier de charge, lack of transparency on revenues, lack of involvement in hiring and firing of guards (minorities),...) (other scenario’s in process)
- Importance of Quid pro Quo agreements that link conservation and livelihood (esp. for support in periphery of RFLY)

