

Engaging poor  
communities in  
conservation = what  
works, what doesn't and  
why

**Dominique Bikaba**  
**Strong Roots, DRC**

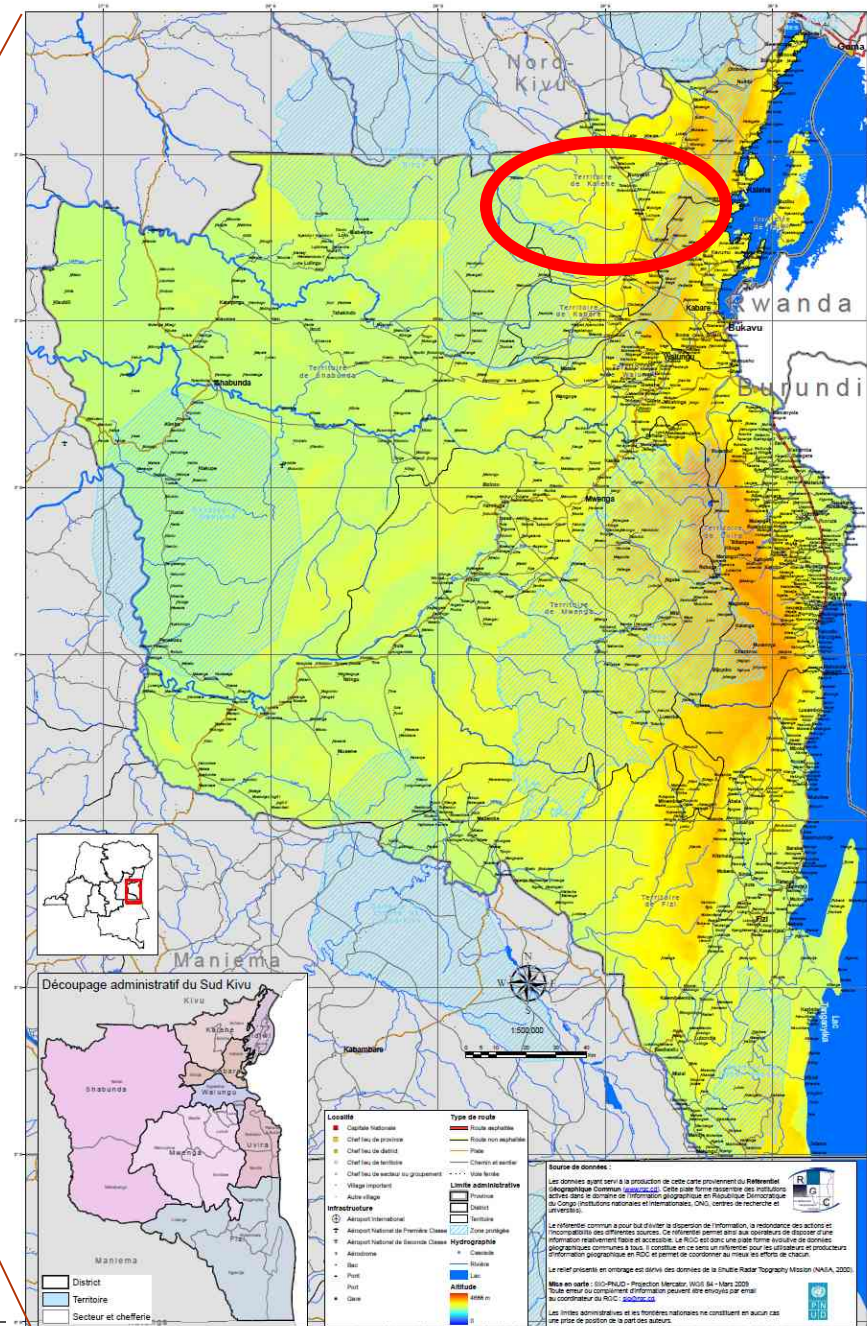
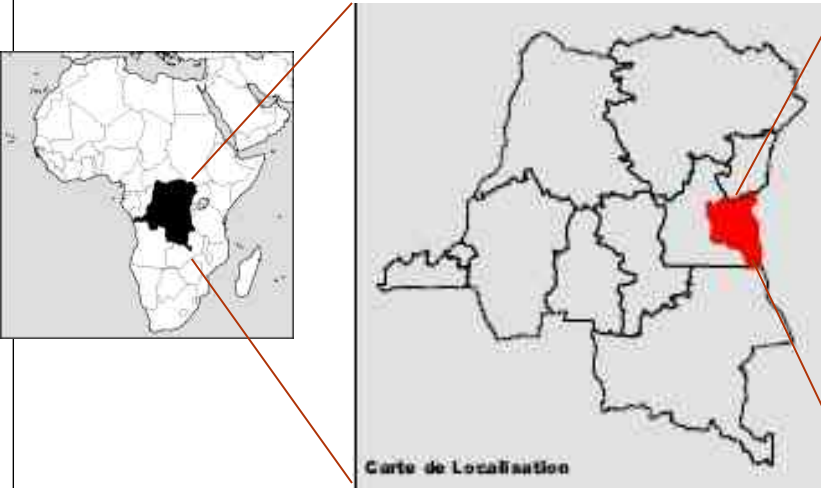
**iied**

International  
Institute for  
Environment and  
Development



**Strong Roots**

# Province du Sud Kivu



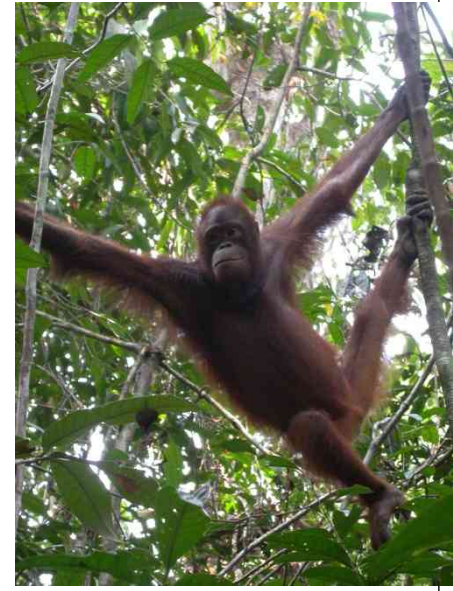
➤ ~1M Km<sup>2</sup> of forest, covering 50% of the national territory

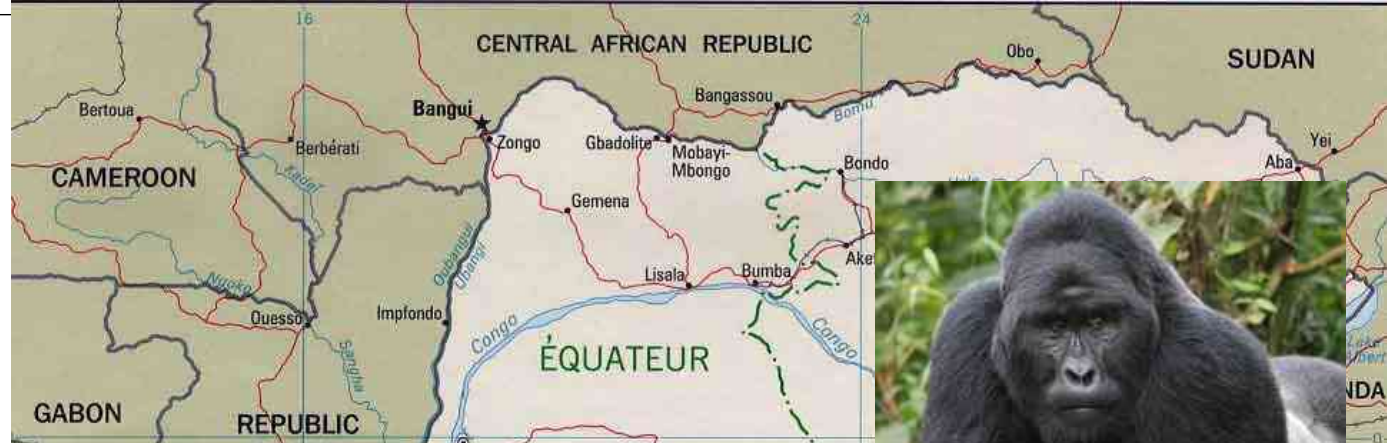
➤ ~ 50% of the African forestland

➤ ~ 86% of the Congo Basin Forest

➤ ~ 10% of national territory covered by forests under protected areas status







**Democratic Republic of the Congo**

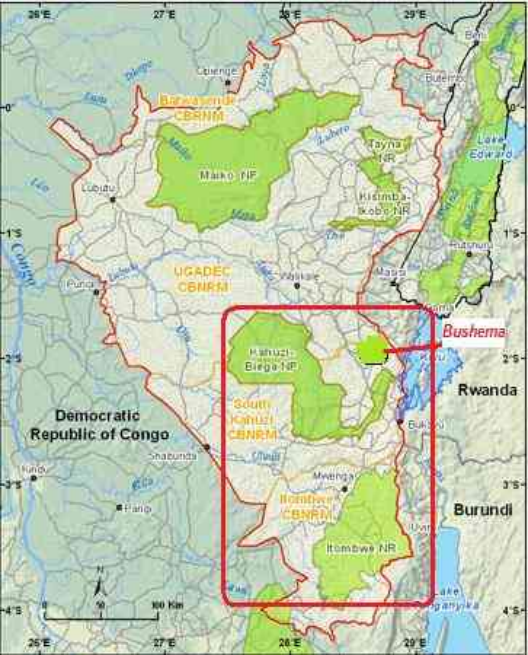
- International boundary
- - - Province boundary
- ★ National capital
- ⊙ Province capital
- +—+—+ Railroad
- Road

\*Kinshasa (Ville de Kinshasa) has status equal to that of a province.

0 100 200 Kilometers  
0 100 200 Miles

Mercator Projection

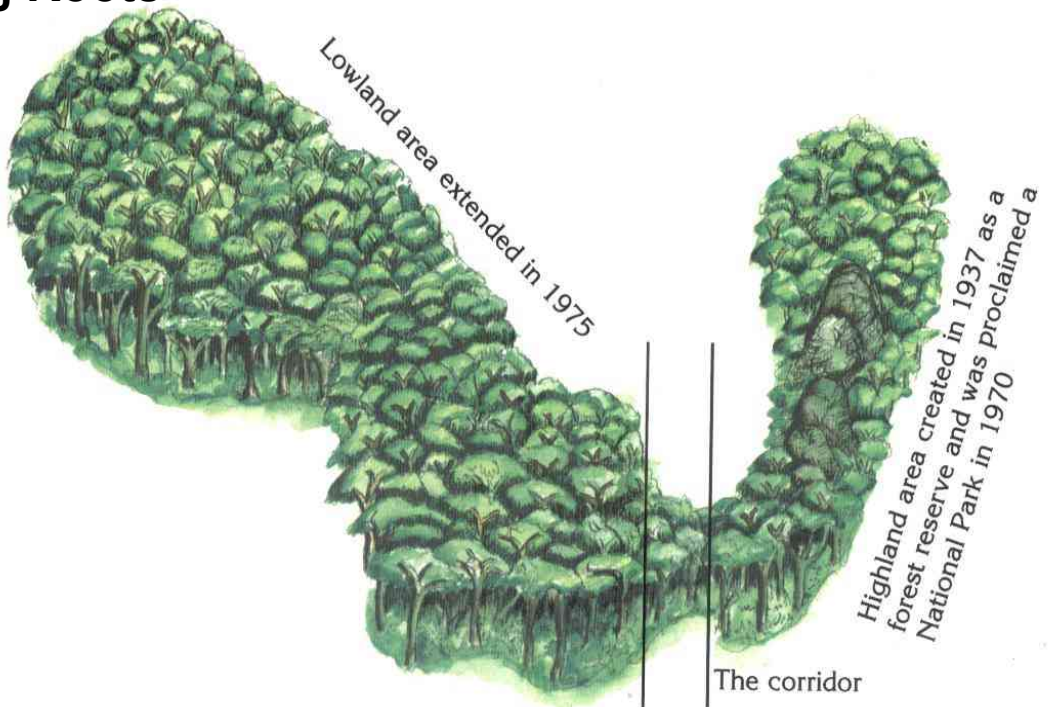
Boundary representation is not necessarily authoritative.



Eastern lowland gorilla in the KBNP

## Case study of Strong Roots at the KBNP

- 1937
- 1970
- 1972
- 1973
- 1975
- 1980
- 1997



# Great Apes Conservation and Poverty alleviation

## Wildlife conservation

- Law enforcement (National parks and Natural reserves)
- Communities engaged in conservation initiatives through sustainable development projects
- Community based conservation initiatives (Traditional knowledge in Community reserves)

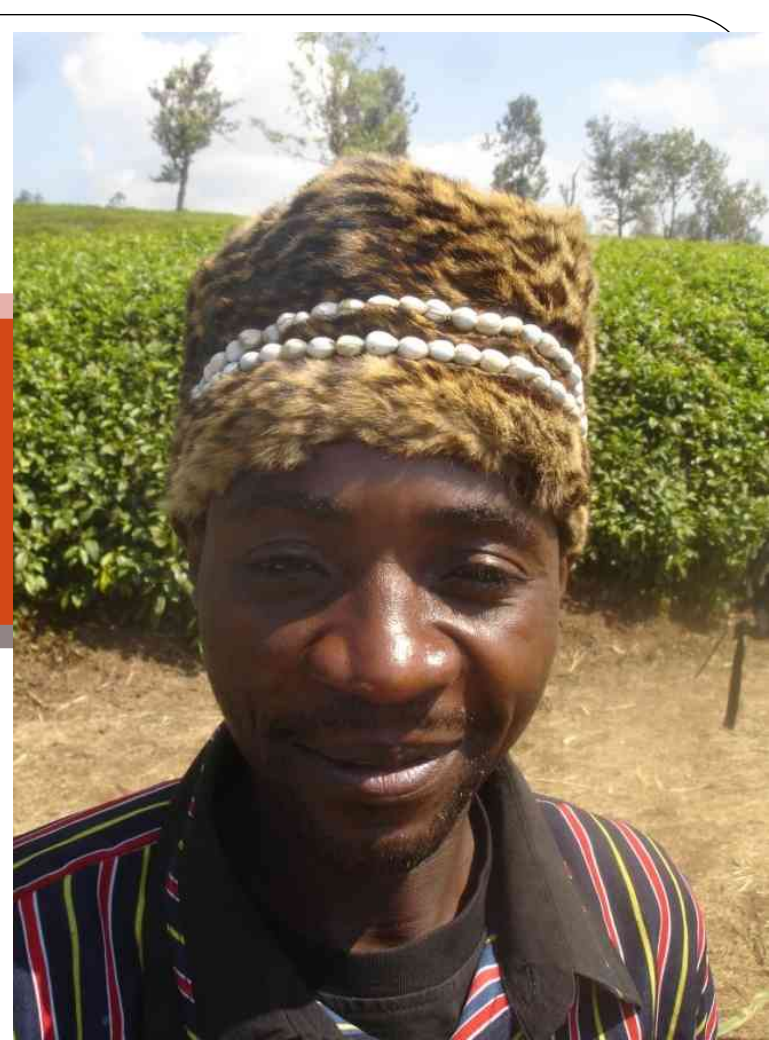
## Poverty in communities

- Poverty indicators
- Communities needs, attitude to apes and habitat, relations with forests... that conservation can address
- Role of the national, international and donors policies towards local and indigenous communities in apes conservation

A woman with a determined expression stands in a field of dark, tilled soil. She is wearing a yellow patterned, off-the-shoulder top and a striped skirt. She holds a wooden-handled hoe in her left hand, with the metal head resting on the ground. Her right hand is raised in a fist. The background shows a field with some sparse green plants and dry sticks.

**What works, what doesn't  
work and why?**

**Not all conservation  
approaches intend to  
reduce poverty and not all  
approaches to reduce  
poverty contribute to  
sustainable conservation**



Some considerations  
need to be taken in  
account

# Communities

1. A set of them are convinced of the importance of apes conservation and would be ready to engage: They know how important the apes conservation is, but they don't have choice
2. A group of communities still are lacking enough conservation skills and knowledge what lead them not being engaged in apes conservation: Ignorance
3. This group of communities is not interested in collaborating with the apes conservation initiatives. They claim their seized lands and want to do revenge

# Communities

1. A set of them are convinced of the importance of apes conservation and would be ready to engage: They know how important the apes conservation is, but they don't have choice  
Plan with them for alternatives and law enforcement
2. A group of communities still are lacking enough conservation skills and knowledge what lead them not being engaged in apes conservation: Ignorance  
Plan with them for alternatives with an educational component
3. This group of communities is not interested in collaborating with the apes conservation initiatives. They claim their seized lands and need revenge  
Law enforcement

# Apes conservation success or failure with poverty reduction are all predictable in the planning process



- ❖ Which category of communities?
- ❖ What are the real needs? Based on their attitudes and relations with the forest
- ❖ Will the planning activities fit in the donors' policies if an endogenous asset for funding is not possible?

Law enforcement is not enough and alternatives are not enough alone





While “Education” is a key for communities, “Structure” is a key for NGOs and CBOs involved in apes conservation

Internal conflicts in organization are limits for CBOs and other local organizations to achieve their goals in ape conservation linked to poverty reduction.

Institutional and technical capacity building is required for local organizations that are interested in this topic.

Our sincere gratitude to these organizations for their support



Partners In Conservation



the gorilla organization



Equator Initiative

zerofootprint™





Thank you