

Conserving Uganda's Productive Landscapes For Ecosystem Services:

The Northern Albertine Rift Chimpanzee Corridor

Lilly Ajarova

Chimpanzee Sanctuary & Wildlife Conservation Trust

info@ngambaisland.org



Chimpanzee Sanctuary & Wildlife Conservation Trust (CSWCT)

- National NGO established in 1998
- Founded by national & international trustee members UWA, ECOTRUST, UWECT, UWS, JGI, IFAW, Born Free Foundation
- **Vision:** Africa's Chimpanzee populations are appreciated and valued by the public, secure in their habitat and no longer threatened
- **Mission:** To promote the understanding, appreciation and conservation of Chimpanzees and their habitats in particular and wildlife in general



PROGRAMS

•**Ngamba Island Chimpanzee Sanctuary-** Long term care for Rescued Chimpanzees

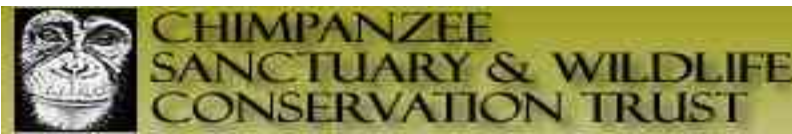
- Animal welfare
- Training and research
- Eco-tourism
- “Sustainable Living on Lake Victoria”

•**Conservation of Wild Chimpanzee Populations-**Projects based in the Northern Albertine Rift area.

- PES Project-GEF/UNEP/NEMA
- Community Based Chimpanzee Habitat Monitoring-GEF/UNDP/WWF
- Forests Restoration and Tree Planting Program-TBA/BAT Biodiversity Partnership/NAHI, Private Sector
- Planning process for “Reintroduction” of the rescued chimps

•**Conservation and Environmental Education.**

- “Change My Community” Program
Outreaches, Education Centers, Media, MDD, and Soccer



The PES Project

Project Goal

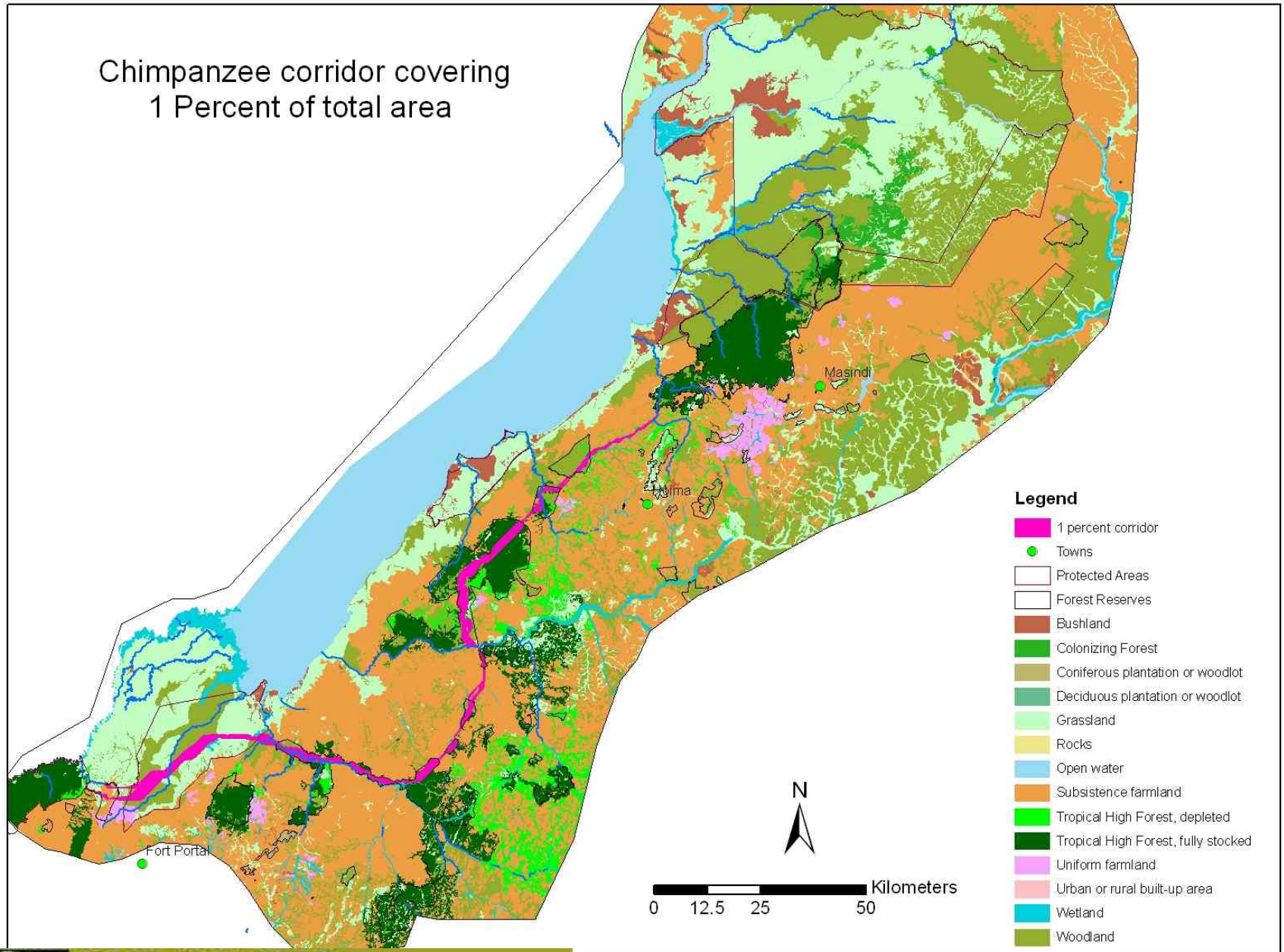
Enhance *Biodiversity Conservation* in the productive landscapes (**Chimpanzee Corridor**) in Uganda and globally through **better understanding** of PES

Specific Objectives

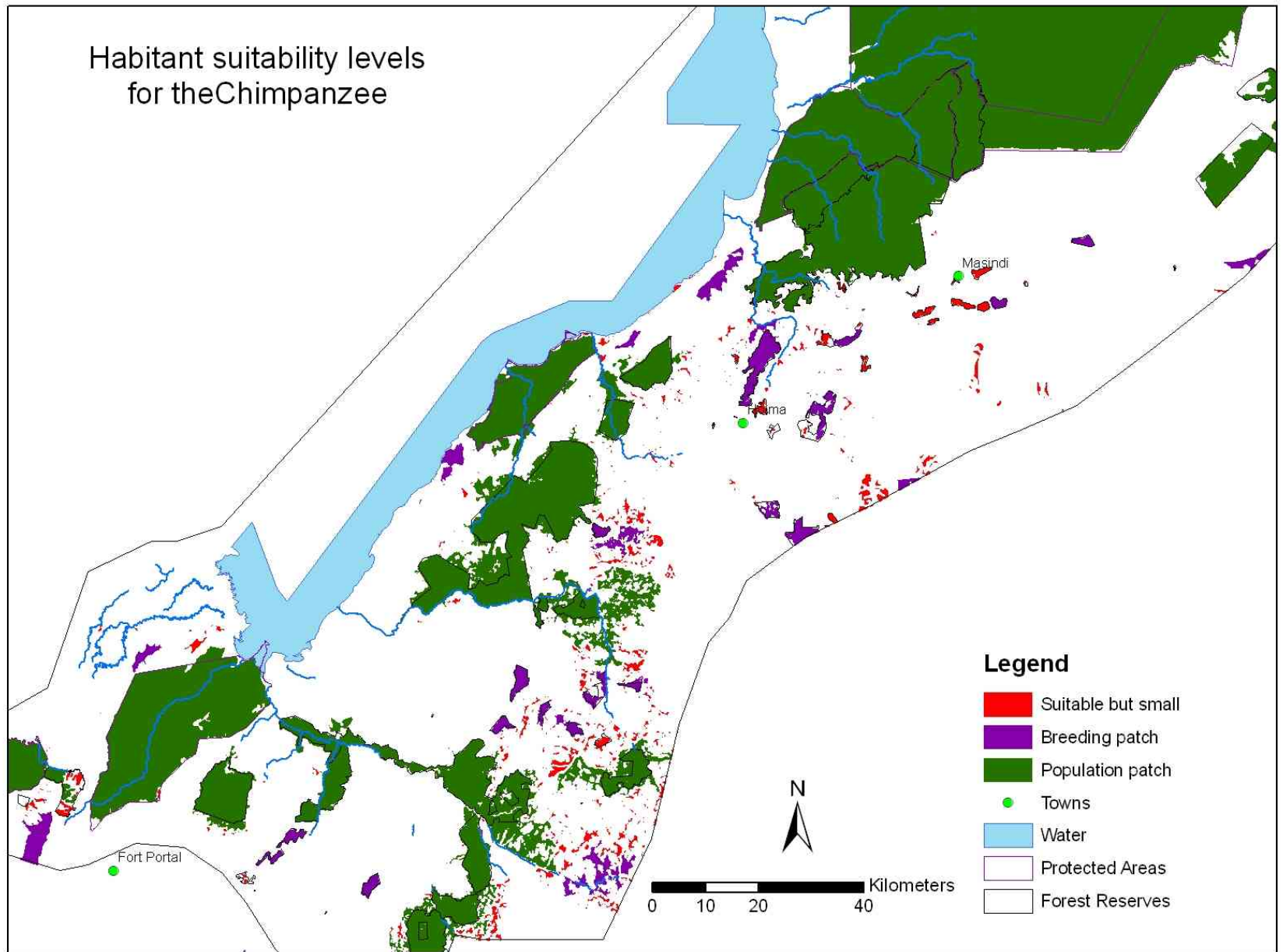
- To pilot a PES scheme based on experimental methodology
- To strengthen technical and institutional capacity to design, monitor and implement PES schemes
- To generate, disseminate and replicate good practices



Chimpanzee corridor covering
1 Percent of total area



Habitant suitability levels for the Chimpanzee



Building on our Lessons Learnt-2007-2010



Education centre

- Environmental Education outreach for schools & communities
- Provides training and meeting venue
- Solar facility- promotion of natural source of energy



- School groups attend to educational program
- Community Library facilities-UNDERWAY
- Demonstrations



- 30 Women trained non-consumptive use of forest resources
- Market outlet to Ngamba, other local markets

Lessons Learnt Continued.....



- Organization of 5 PFO associations and training in forest based enterprises
- Institutional development eg registration with Authorities



- Bee keeping and Animal husbandry for 30 PFOs as alternative IGA
- Benefits passed on and savings made in the group



- 3 tree nurseries for seedlings for enrichment planting and income
- Seedlings given free to PFOs as incentive
- About 80,000 planted by PFOs, schools, subcounty H/Qs and by private sector

Testing effectiveness of PES Schemes; Experimental methodology and impact evaluation

WHY IMPACT EVALUATION


 Where to spend limited resources?

 What works and what does not?

 Sometimes conventional wisdom needs to be rethought

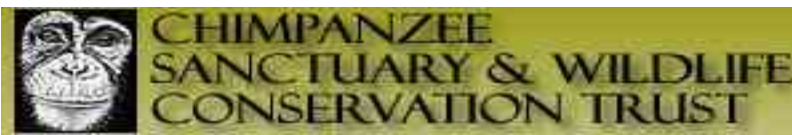
 Estimate magnitude of effects of PES scheme

 Find cost-effective solutions

 How to improve programs and obtain replicable models?

PROGRAM STRUCTURE

- The program will work in **some** areas in Nkusi, Waki and Wambabya Catchments.
- 70** villages **treatment** and **70** villages **comparison**
Selection done in Public Lottery.
- Villages and Individual HH to be thoroughly studied during socio-economic and ecological baseline data surveys
- Scientists on the Evaluation and Monitoring Team to be led by IPA and NAHI
- CSWCT and IIED leading implementation of the Scheme
- NEMA executes and oversees. Funding from UNEP/GEF



Project Implementation Flow

- Local consultations and sensitization-Ongoing
- Census of PFOs-Ongoing
- Baselines on Indicator variables e.g incidence of wildlife, tree density, socio-economic outcomes-Planned with WCS
- Determination of appropriate Land management practices and training in the same
- Institutional framework design
- Drafting, negotiation and signing of agreements for well defined practices to secure the ecosystem services
- Offer payments for the contracts-UNEP/GEF fund for 3 yrs
- Monitoring and evaluation of the scheme including leakages and spillovers
- Packaging of the scheme and certification for marketing
- Advocacy and dissemination of lessons



Opportunities

- **Enabling policy**....nationally and Internationally
- **Existing local structures**...PFOs, CFM
- **Willingness at District Level**.. departments
- **Skilled people/team**...scientists and research institutions, stations e.g BCFS, MUBFS
- **Complementary projects**...in the landscape (ECOTRUST,JGI, WCS,WWF,CARE,NAHI,NFA, REDD)
- **Private Sector**...BAT, Hydromax, Tullow, City Tyres, Standard Chartered Bank, Coca-cola, Tel Companies etc





UNITED NATIONS ENVIRONMENT PROGRAMME

Programme des Nations Unies pour l'environnement Programa de las Naciones Unidas para el Medio Ambiente
Программа Организации Объединенных Наций по окружающей среде برنامج الأمم المتحدة للبيئة
联合国环境规划署



Thank You



International
Institute for
Environment and
Development

