

CBD-CoP9



Incorporating Poverty and Census Maps in Wetlands Management in Uganda

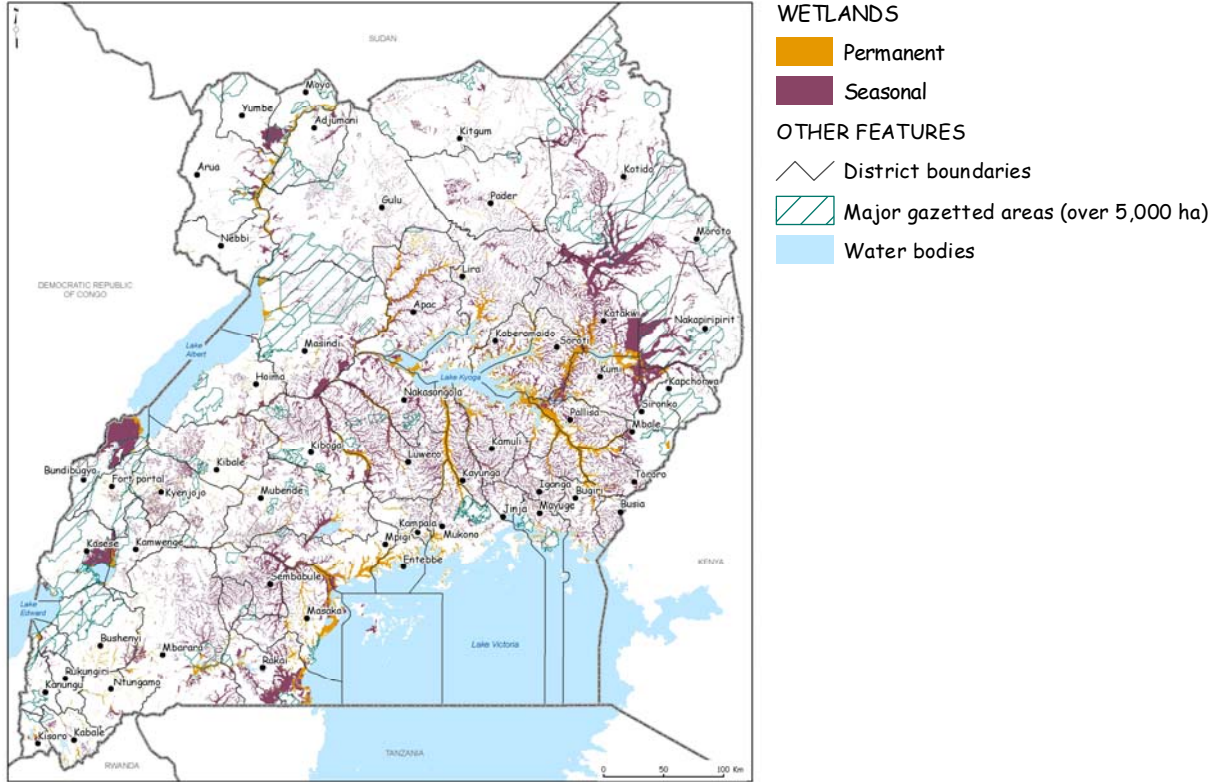
By Craig Hanson

**Wetlands Management Department, Ministry of Water and Environment
Uganda Bureau of Statistics
World Resources Institute
International Livestock Research Institute**

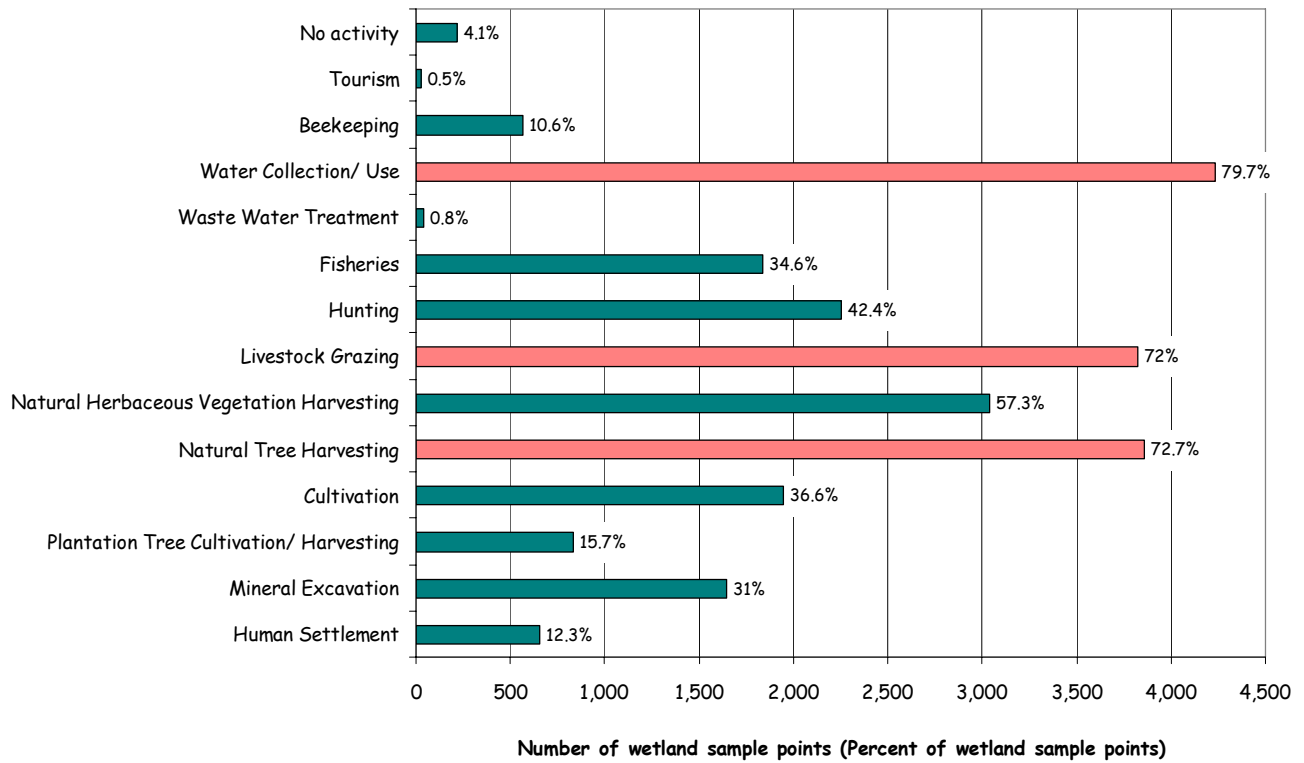
May 2008

For more information, please contact Florence Landsberg: flandsberg@wri.org
+1/202/729.76.93

Permanent and Seasonal Wetlands, 1996



Uses of Uganda's Wetlands, 1997 - 2001

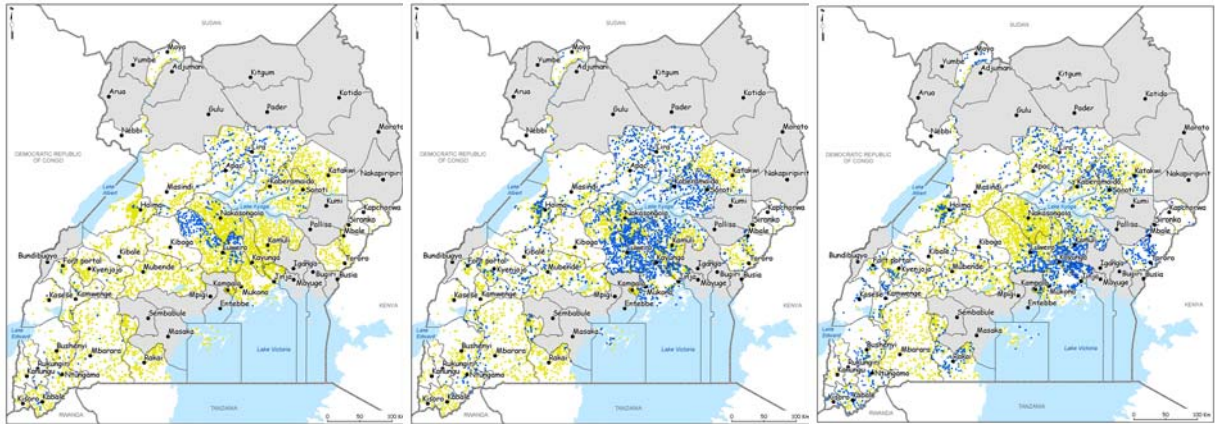


Spatial Distribution of Uses

Beekkeeping

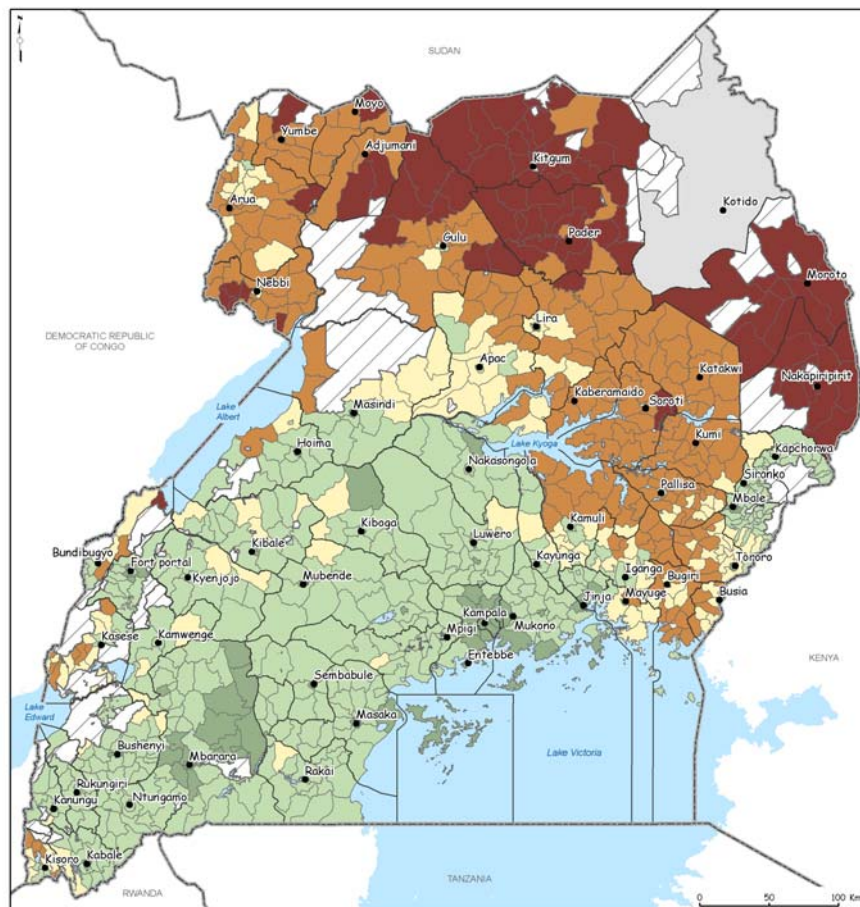
Hunting

Cultivation of food and fiber



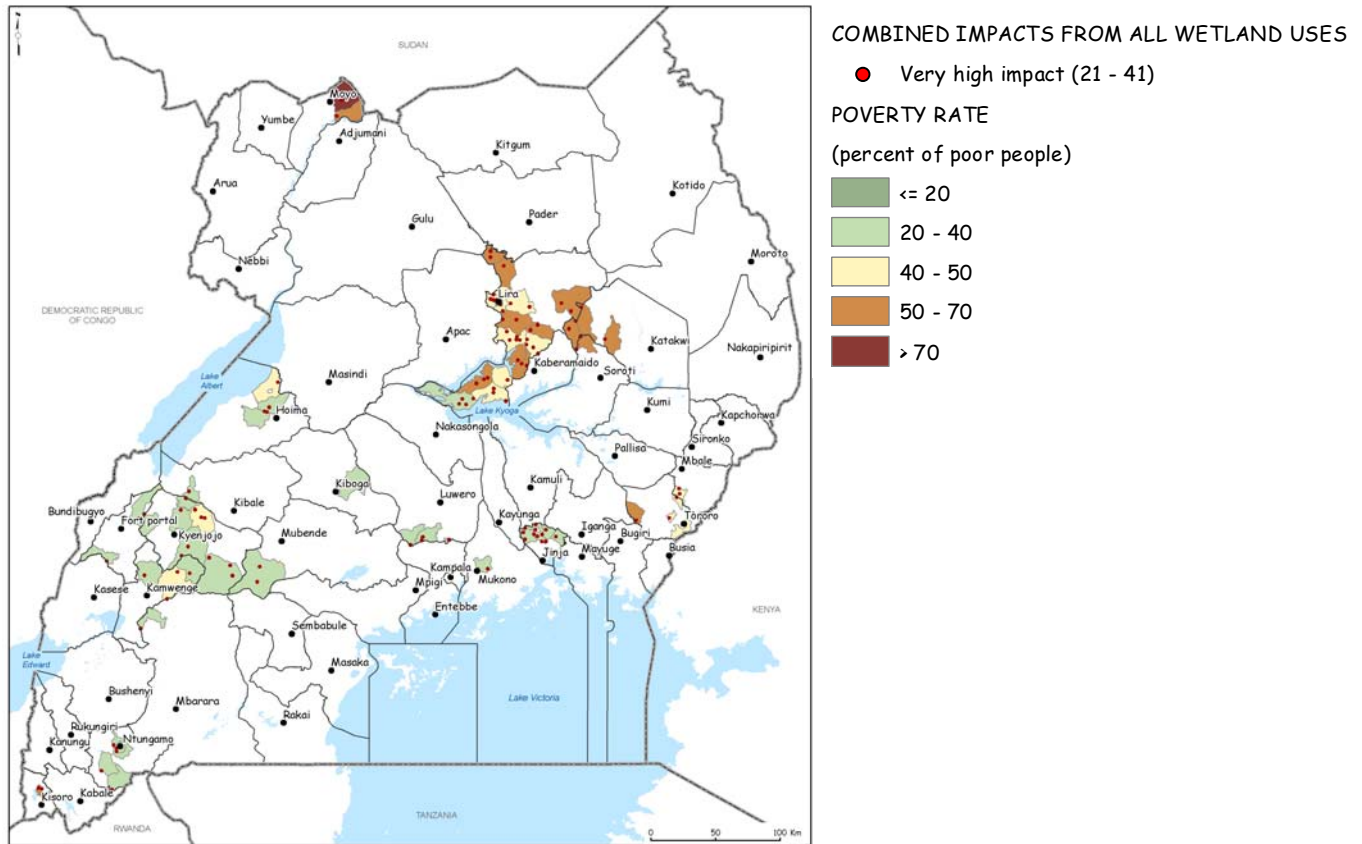
- Activity takes place
- Activity doesn't take place
- No data

Poverty Rate, 2002



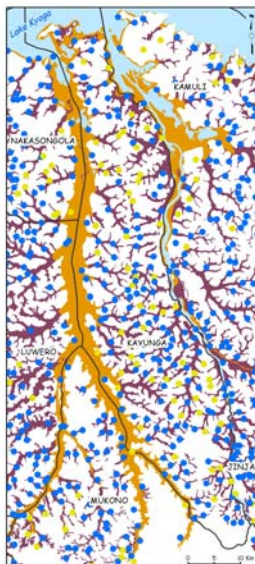
- POVERTY RATE
(percent of poor people)
- ≤ 20
 - 20 - 40
 - 40 - 50
 - 50 - 70
 - > 70
 - No data

Poverty Rates in Subcounties with Very High Wetland-Use Impacts



Sanitation, Drinking Water, Health, and Wetlands

Wetland System and water collection and use



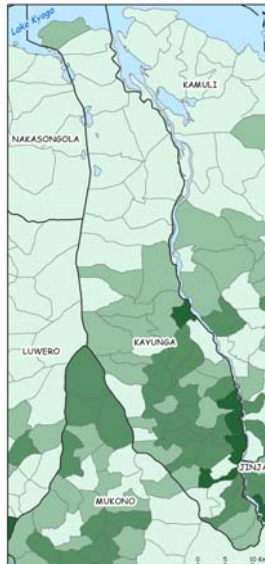
WETLAND SAMPLE POINT

- with water collection and use
- without water collection and use

WETLANDS

- Permanent
- Seasonal

Lack of sanitation facilities



DENSITY OF HOUSEHOLDS WITHOUT SANITATION FACILITIES

(number of households without latrine per sq. km)

- ≤ 10 (low pollutant load)
- 10 - 15
- 15 - 30
- 30 - 370 (high pollutant load)

Integration of wetland and health considerations

