

# Conservation, Livelihoods and Poverty Reduction



**Andreas Lehnhoff**  
**[alehnhoff@tnc.org](mailto:alehnhoff@tnc.org)**

**The Nature  
Conservancy**   
Protecting nature. Preserving life.™

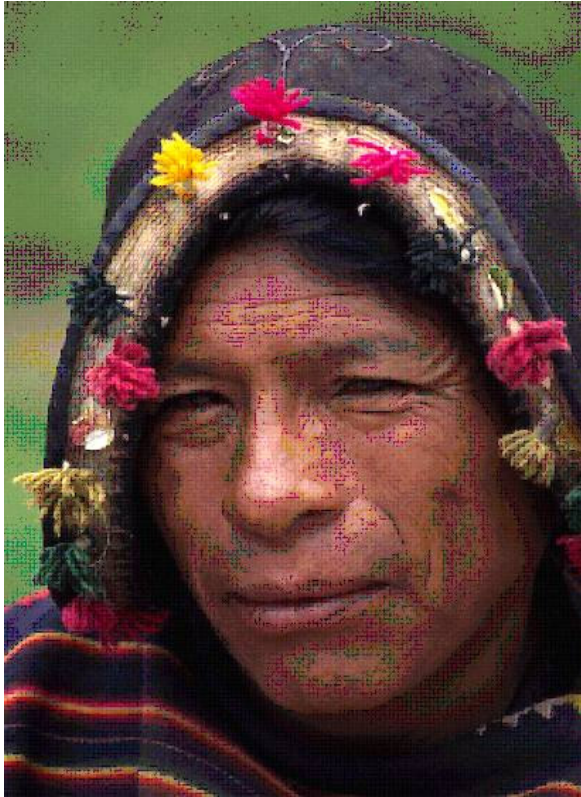
# A CORE VALUE OF THE NATURE CONSERVANCY

## Respect for People, Communities, and Cultures

*“Enduring conservation success depends on the active involvement of people and partners whose lives and livelihoods are linked to the natural systems we seek to conserve. We respect the needs, values and traditions of local communities and cultures, and we forge relationships based on mutual benefit and trust.*

- *Demonstrate respect by committing to local, on the ground involvement with people, communities and cultures, and with awareness and sensitivity to their economic realities*
- *Treat our partners and colleagues with fairness and honesty.*
- *Work collaboratively with all sectors of society, including indigenous people, to develop practical conservation solutions.”*

# SOME BASIC ASSUMPTIONS



- We can only be effective if we work in partnership with the people
- We recognize that the poorest are often the most directly dependant on natural resources
- We recognize that conservation actions have an impact on livelihoods and poverty and should strive to contribute to poverty reduction and at the very minimum - do no harm
- striving to improve human well-being is an integral part of ensuring sustainability of biodiversity

# CHALLENGE # 1: ORGANIZATIONAL EXPERTISE



## Challenges:

- As a conservation organization we know conservation planning and management
- We don't know as much as we need to about livelihoods and poverty

## Part of the solution:

- Partner well with others!

# CHALLENGE # 2: RECONCILING MEASURES OF SUCCESS



## Challenges:

- Conservation is ultimately measured on ecological factors
- Livelihoods are ultimately measured by human development indicators
- **BUT** both conservation and livelihoods are input to ensure the others' success

## Part of the solution:

- Build social, economic and cultural considerations into conservation project planning methods
- Build an integrated approach to ecological, economic, social and cultural assessments, with WCPA

# CHALLENGE # 3: AN INCREASINGLY CHALLENGING GLOBAL CONTEXT



## Challenge:

- Both the environment and the livelihoods of the rural poor are being impacted by the current economic growth model

## Part of the solution:

- Need to deepen common understanding between conservation and rural social development goals

# EXAMPLES OF BUILDING SOLUTIONS FOR RECONCILING CONSERVATION AND LIVELIHOODS



- Sierra Nevada de Santa Marta, Colombia: supporting indigenous peoples territories and conservation areas
- Adelberts, Papua New Guinea: supporting community conservation areas by helping them manage their forests -
- Atitlan Volcanoes, Guatemala: Working with indigenous communities to derive income through sustainable coffee and tourism